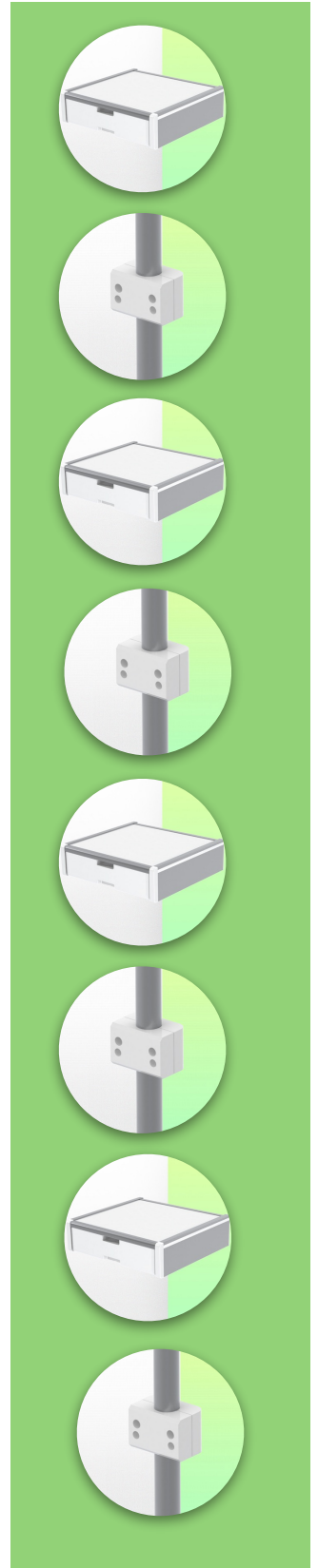
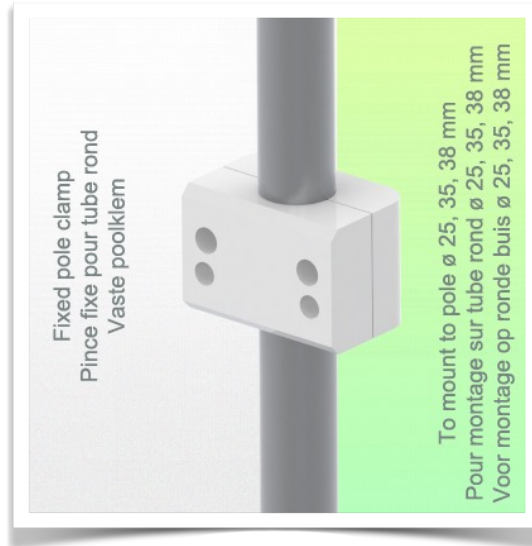
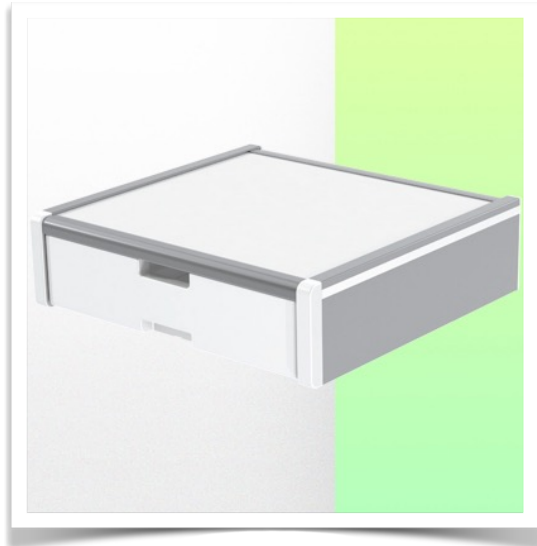


Presentation

Part Number: WM 227.115

Medical Drawer Internal dimensions 375 x 335 x 85 mm For mounting on fixed ø 30mm tube



Medical drawer for mounting on ø 30 mm fixed tube

This storage drawer with an internal dimension of 375 x 335 x 85 mm is the ideal space for storing all medical accessories. Its anodised, HPL and ABS surface is scratch, shock and disinfectant resistant.

The materials used are aluminium and HPL (high pressure laminate).

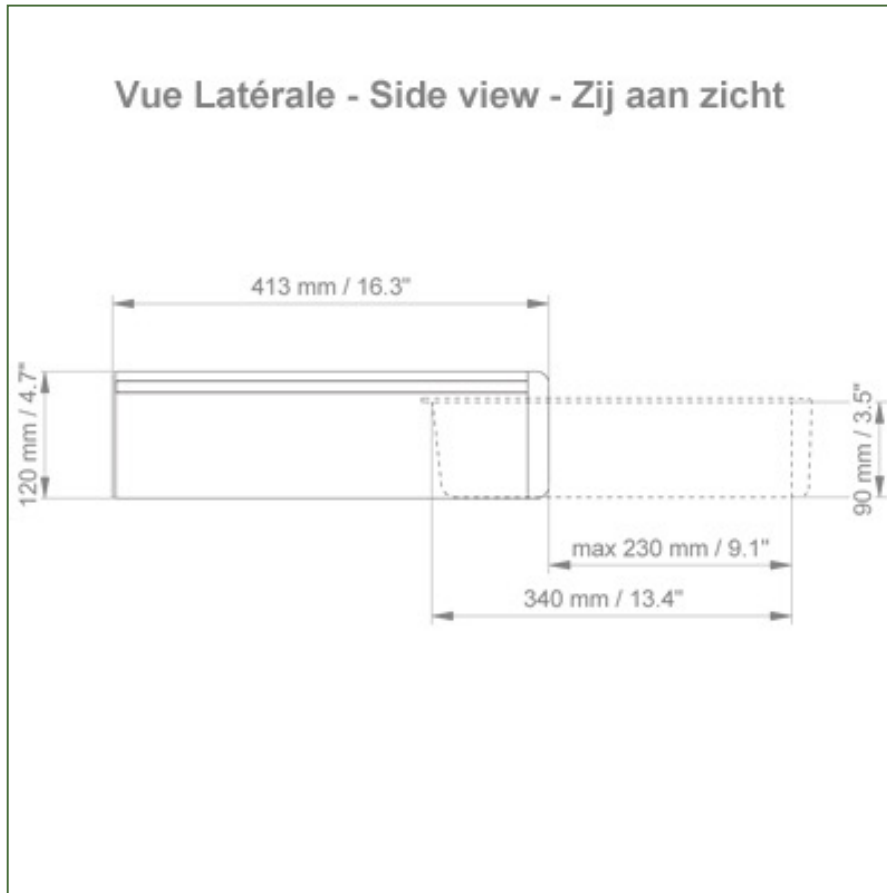
Technical specifications:

- * External dimensions: 440 x 413 x 120 mm (W x D x H)
- * Internal dimensions of drawer: 375 x 335 x 85 mm (W x D x H)
- * Material: Aluminium, (high pressure laminate), ABS
- * Surface: Anodised, HPL and ABS (= scratch, impact and disinfectant resistant)
- * Max. worktop load capacity: 25 kg
- * Drawer load capacity max: 5 Kg
- * Fixed tube adapter ø 30 mm included in this configuration

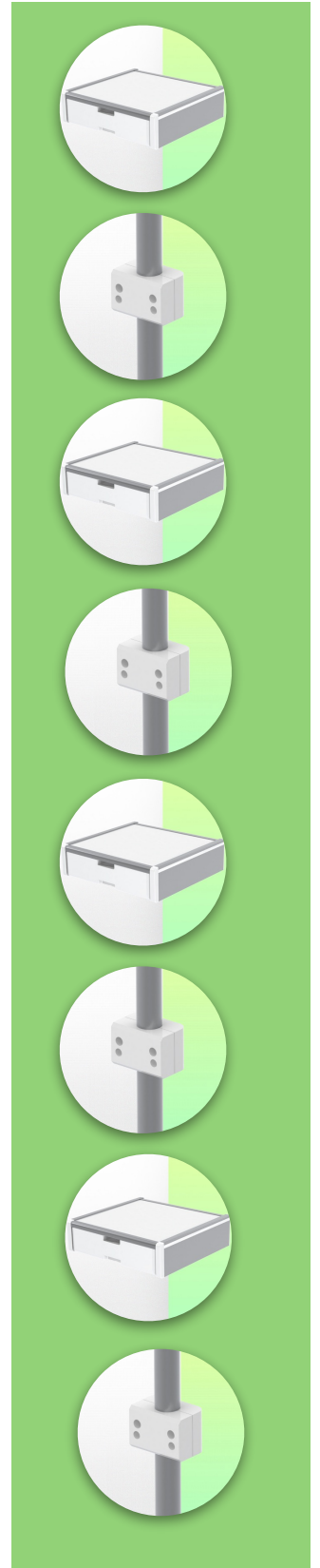
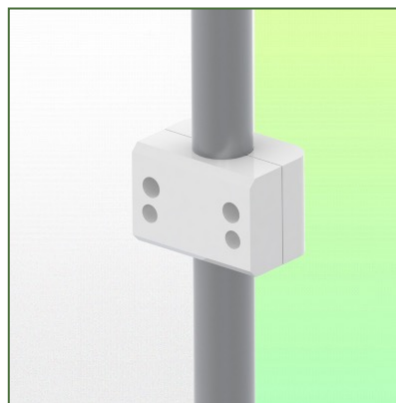
Technical specifications

Part Number: WM 227.115

Medical Drawer Internal dimensions 375 x 335 x 85 mm For mounting on fixed \varnothing 30mm tube



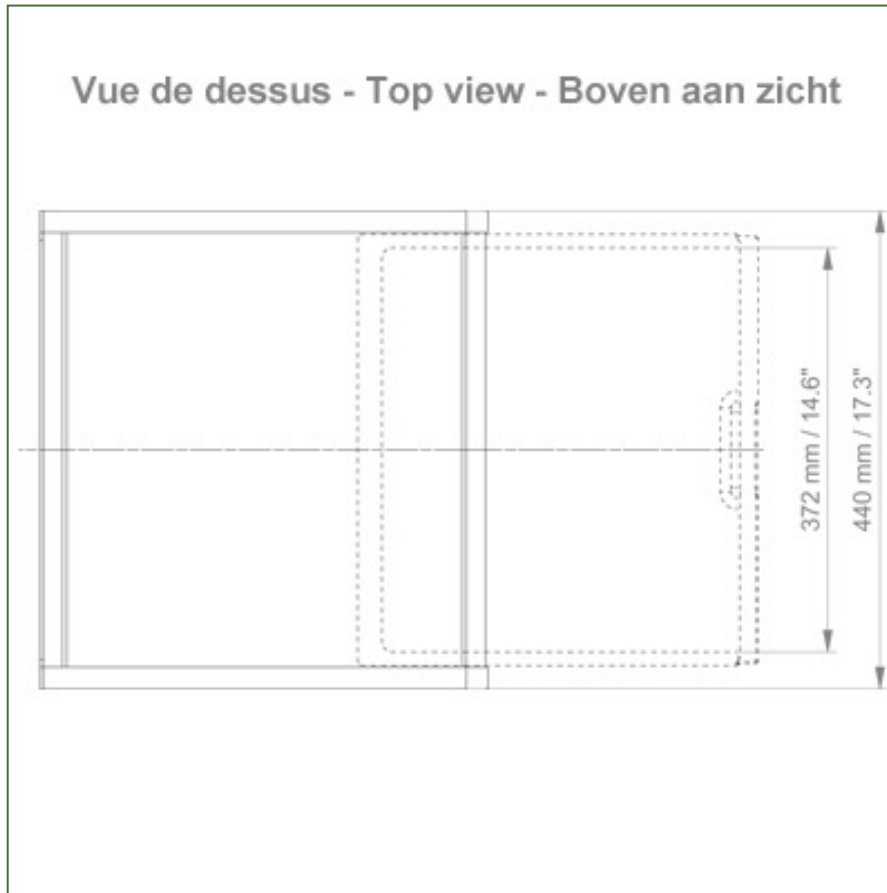
+



Technical specifications

Part Number: WM 227.115

Medical Drawer Internal dimensions 375 x 335 x 85 mm For mounting on fixed ø 30mm tube



+

