

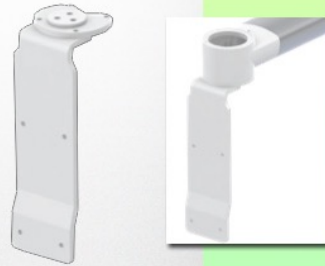
Presentation

Part Number: WM 227.154

Small serving basket 200 x 150 x 100 mm, for mounting on medical arm not adjustable in height



Adaptateur pour bras médical non ajustable
Adapter voor niet-verstelbare medische arm
Adapter, for non-adjustable medical arm



Pour montage sur bras non ajustable en hauteur
For mounting on non-height adjustable arm
Voor montage op niet in hoogte verstelbare arm



This small serving basket with its open structure will allow you to see the contents directly. This storage solution is a perfect complement to your medical workstation.

Technical specifications:

- * Dimensions: 200 x 150 x 100 mm (W x D x H)
- * Max. basket load capacity: 2.5 Kg
- * Adapter for non-height adjustable medical arm included in this configuration
- * Color: White
- * Warranty: 5 years

