

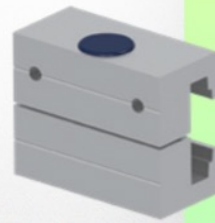
Presentation

Part Number: WM 227.187

Universal support clamp Adjustable from 35 - 57 mm, for mounting on horizontal standard rails 10 x 25, 8 x 35, 10 x 30, 10 x 50 mm



Fixed rail clamp
Pince fixe pour rail normalisé
Vaste railklem



To mount to horizontal European rails
Pour fixation sur un rail normalisé horizontal
Te monteren op horizontale Europese rails
10 x 25, 8 x 35, 10 x 30, 10 x 50 mm



This Universal Clamp is adjustable in width and height according to the length of the wall or column rail and is an ideal space-saving solution when small power supplies or small medical equipment need to be placed in your workstation.

Technical specifications:

- * Adjustment range from 35 to 57 mm
- * Fixed clamp for horizontal standard rail included in this configuration
- * Color: RAL 9016 white
- * Warranty: 5 years

