

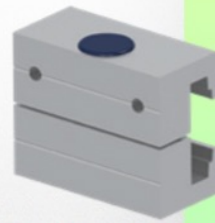
**Presentation**

**Part Number: WM 227.190**

**Universal support clamp Adjustable from 48 - 63 mm, for mounting on horizontal standard rails 10 x 25, 8 x 35, 10 x 30, 10 x 50 mm**



**Fixed rail clamp**  
Pince fixe pour rail normalisé  
Vaste railklem



To mount to horizontal European rails  
Pour fixation sur un rail normalisé horizontal  
Te monteren op horizontale Europese rails  
10 x 25, 8 x 35, 10 x 30, 10 x 50 mm



This Universal Clamp is adjustable in width and height according to the length of the wall or column rail and is an ideal space-saving solution when small power supplies or small medical equipment need to be placed in your workstation.

**Technical specifications:**

- \* Adjustment range from 48 to 63 mm
- \* Fixed clamp for horizontal standard rail included in this configuration
- \* Color: RAL 9016 white
- \* Warranty: 5 years

