

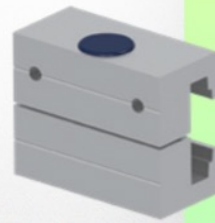
Presentation

Part Number: WM 227.196

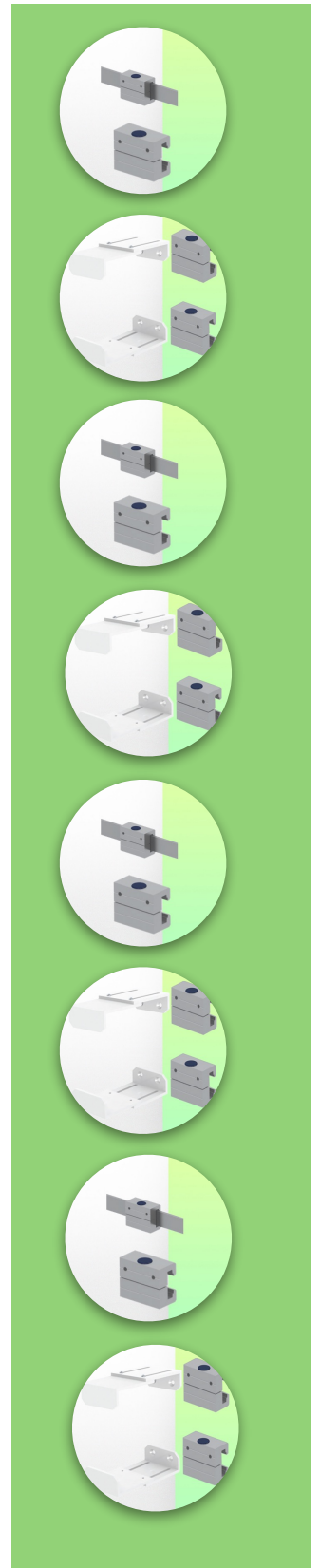
CPU Holder Adjustable from 45 - 70 mm, for mounting on horizontal standard rails 10 x 25, 8 x 35, 10 x 30, 10 x 50 mm



Fixed rail clamp
Pince fixe pour rail normalisé
Vaste railklem



To mount to horizontal European rails
Pour fixation sur un rail normalisé horizontal
Te monteren op horizontale Europese rails
10 x 25, 8 x 35, 10 x 30, 10 x 50 mm



Securing a CPU is not an easy task and the fixing constraints are very complex. This solution in your working environment is the ideal solution to secure your CPU while respecting the access standards to facilitate the computing needs in case of problems with your PC.

Technical specifications:

- * Bracket adjustment range from 45 to 70 mm
- * 2 clamps (top and bottom)
- * 2 Din Rail adapters for mounting on horizontal standard rails 10 x 25, 8 x 35, 10 x 30, 10 x 50 mm included in this configuration
- * Color: RAL 9016 white
- * Warranty: 5 years

