

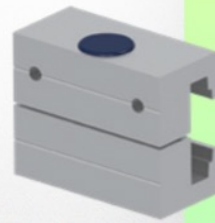
**Presentation**

**Part Number: WM 227.202**

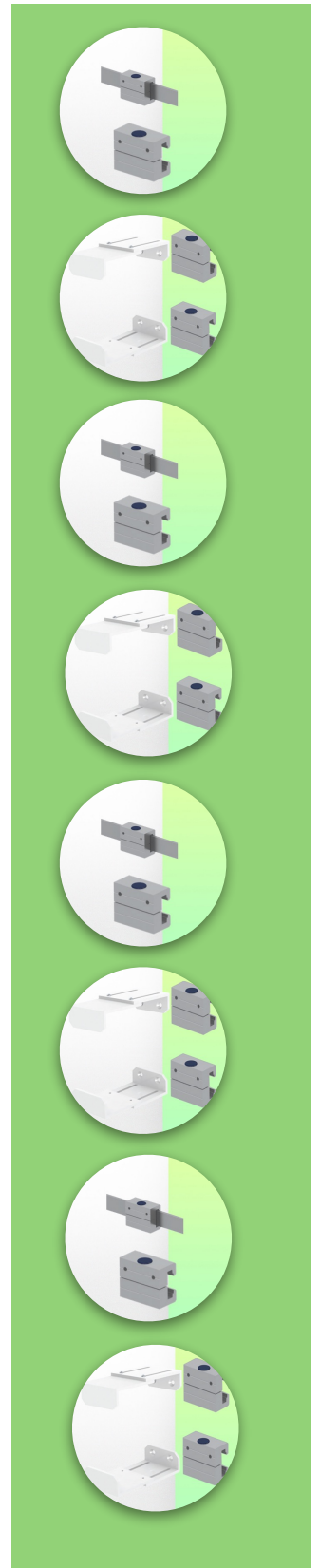
**CPU Holder Adjustable from 85 - 150 mm, for mounting on horizontal standard rails 10 x 25, 8 x 35, 10 x 30, 10 x 50 mm**



**Fixed rail clamp**  
Pince fixe pour rail normalisé  
Vaste railklem



To mount to horizontal European rails  
Pour fixation sur un rail normalisé horizontal  
Te monteren op horizontale Europese rails  
10 x 25, 8 x 35, 10 x 30, 10 x 50 mm



Securing a CPU is not an easy task and the fixing constraints are very complex. This solution in your working environment is the ideal solution to secure your CPU while respecting the access standards to facilitate the computing needs in case of problems with your PC.

**Technical specifications:**

- \* Bracket adjustment range from 85 to 150 mm
- \* 2 clamps (top and bottom)
- \* 2 Din Rail adapters for mounting on horizontal standard rails 10 x 25, 8 x 35, 10 x 30, 10 x 50 mm included in this configuration
- \* Color: RAL 9016 white
- \* Warranty: 5 years

