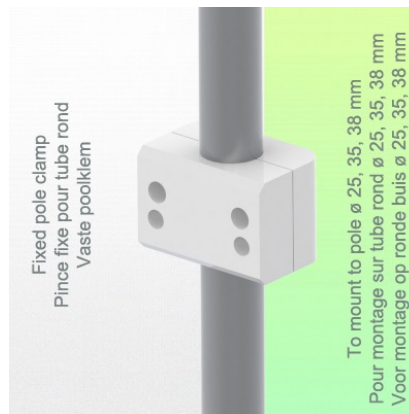
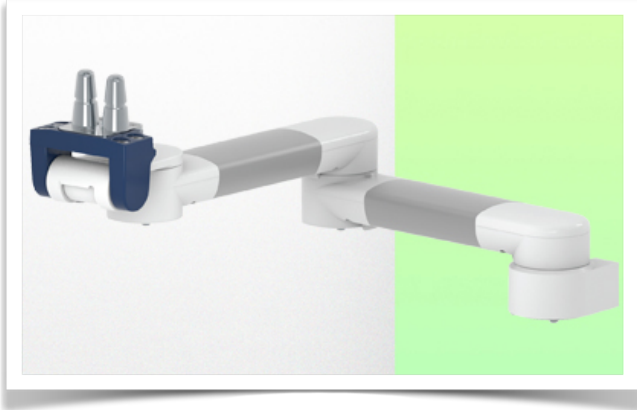


**Presentation**

**Part Number: WM 260.116**

**Horizontal 615 mm double medical arm for monitoring. Adaptation to 5" plate, mounted on 25, 35 and 38 mm diameter fixed pole. Dräger and GE compatible.**



**Horizontal 615 mm double medical arm for monitoring. Adaptation to 5" plate, mounted on 25, 35 and 38 mm diameter fixed pole. Dräger and GE compatible.**

This 591 mm Horizontal Arm allows you to fix, orient and adjust the monitor perfectly. It is covered with an anti-microbial agent offering hygiene and cleaning in every detail. Its modern design has been specially designed for healthcare environments.

**Technical characteristics:**

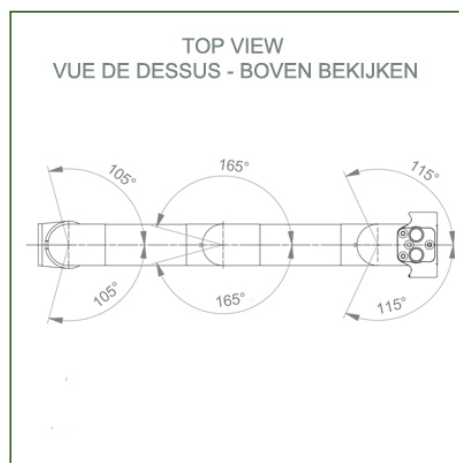
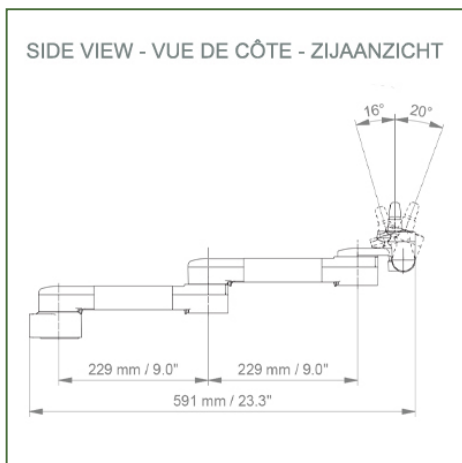
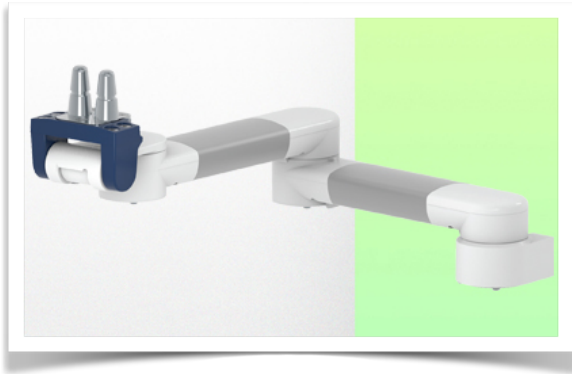
- \* Built-in cable passage
- \* For Light Application
- \* Fixed pole mounting with 25 diameter, 35 or 38 mm
- \* This 591 mm arm simply pinches on the pole and adjusts to the desired height and fixed. It has no height adjustment.
- \* The head of this arm complies with the Philips Intellivue series Monitor mounting standard, which does not exceed 8 Kg.
- \* Monitor tilt: 20° down and 12° up
- \* Monitor rotation: 115° right, 115° left.
- \* Arm rotation: 105° right, 105° left.
- \* Total length 591 mm
- \* Color RAL 5013 cobalt blue and RAL 9016 traffic white
- \* Warranty: 5 years



## Technical specifications

Part Number: WM 260.116

Horizontal 615 mm double medical arm for monitoring. Adaptation to 5" plate, mounted on 25, 35 and 38 mm diameter fixed pole. Dräger and GE compatible.



**Monitor adaptation:** Philips Intellivue series  
**Color: Decorative parts:** RAL 5013 cobalt blue  
**Aluminum parts:** RAL 9016 traffic white  
**Max load capacity, support arm:** 8 kg  
**Max load monitor adaptation:** 8 kg  
**Product weight:** 2.8 kg

### Product highlights:

Arm not adjustable in height. The pivoting arms and extended pivoting arms provide complete cable integration and easy cleaning for infection control in all critical care areas of the clinical environment. Our 5-year warranty guarantees reliable, trouble-free and maintenance-free operation. The swivel function at the attachment point as well as the tilt and swivel function of the monitor adaptation provide optimal positioning of your device. The extended swing arm is a two-part arm with a central pivot point between the two arm sections. All monitors mounted at the bottom have the safety function of a 20° tilt stop.



**Mounting information - Pole diameter**

**Part Number: WM 260.116**

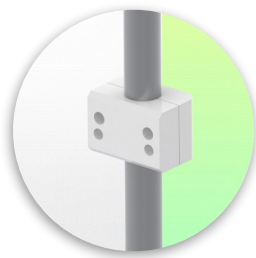
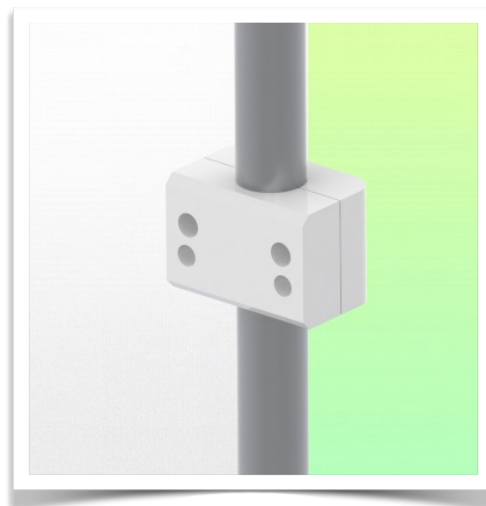
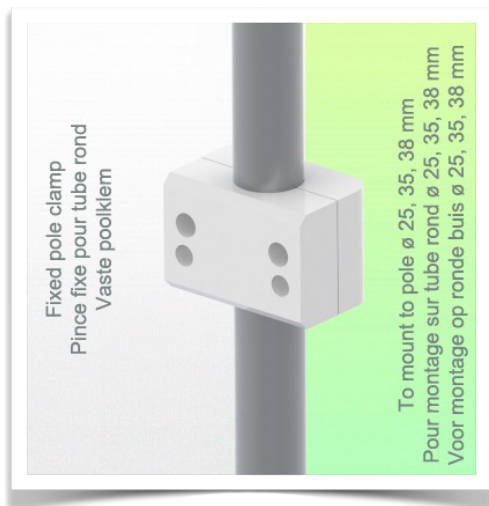
**Horizontal 615 mm double medical arm**

**for monitoring. Adaptation to 5" plate, mounted on 25, 35 and 38 mm diameter fixed pole.**

**Fixed clamp for round tube:**

For mounting on round tube  $\varnothing$  25, 35, 38 mm

\* Please specify the diameter of the pole when ordering



**Presentation**

**Part Number: WM 260.116**

**Horizontal 615 mm double medical arm for monitoring. Adaptation to 5" plate, mounted on 25, 35 and 38 mm diameter fixed pole. Dräger and GE compatible.**



**Adaptation monitoring Philips Intellivue series**

All our medical arms can be fitted with this adaptation, some illustrations of which can be found here.

